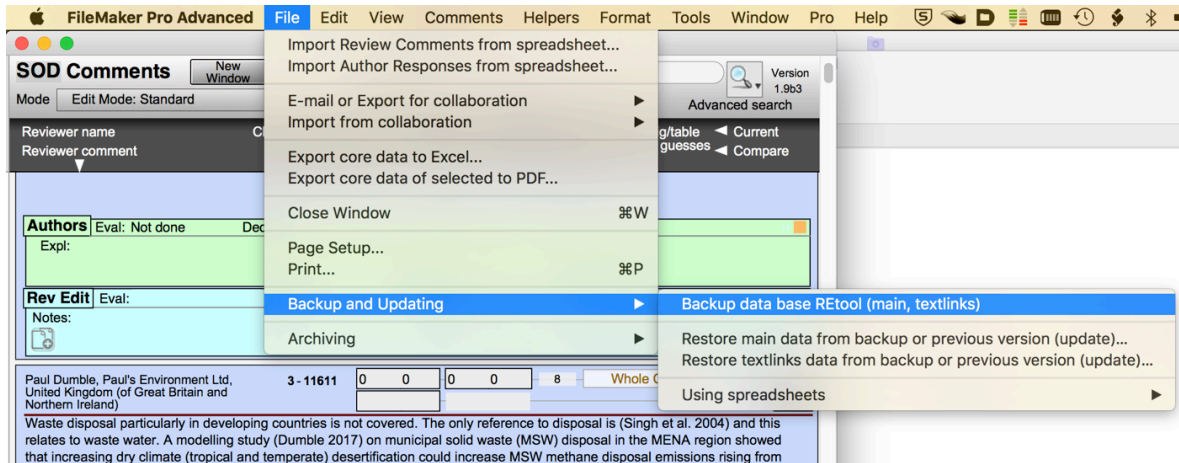


To install this update:

1) Make a backup of your current work with REtool (This is very important and necessary if you wish to keep your work you have done so far using REtool)



2) Move all files contained in this update to the REtool work folder and/or subfolder therein by overwriting any identically named file with the one from this update

3) Launch REtool and choose option “Updating” if you wish to restore from the backup the same state you had before the update and as saved in step 1. Otherwise choose option “First use” to start from scratch.



af, 7.Aug.2019